



PARTS LIST FOR 1963VV, 1965V, & 1965VV 1965V-5/8, 1965VV-5/8 SERIAL "E"

Form Z283B
Date 1-99/A
Page 1 of 4

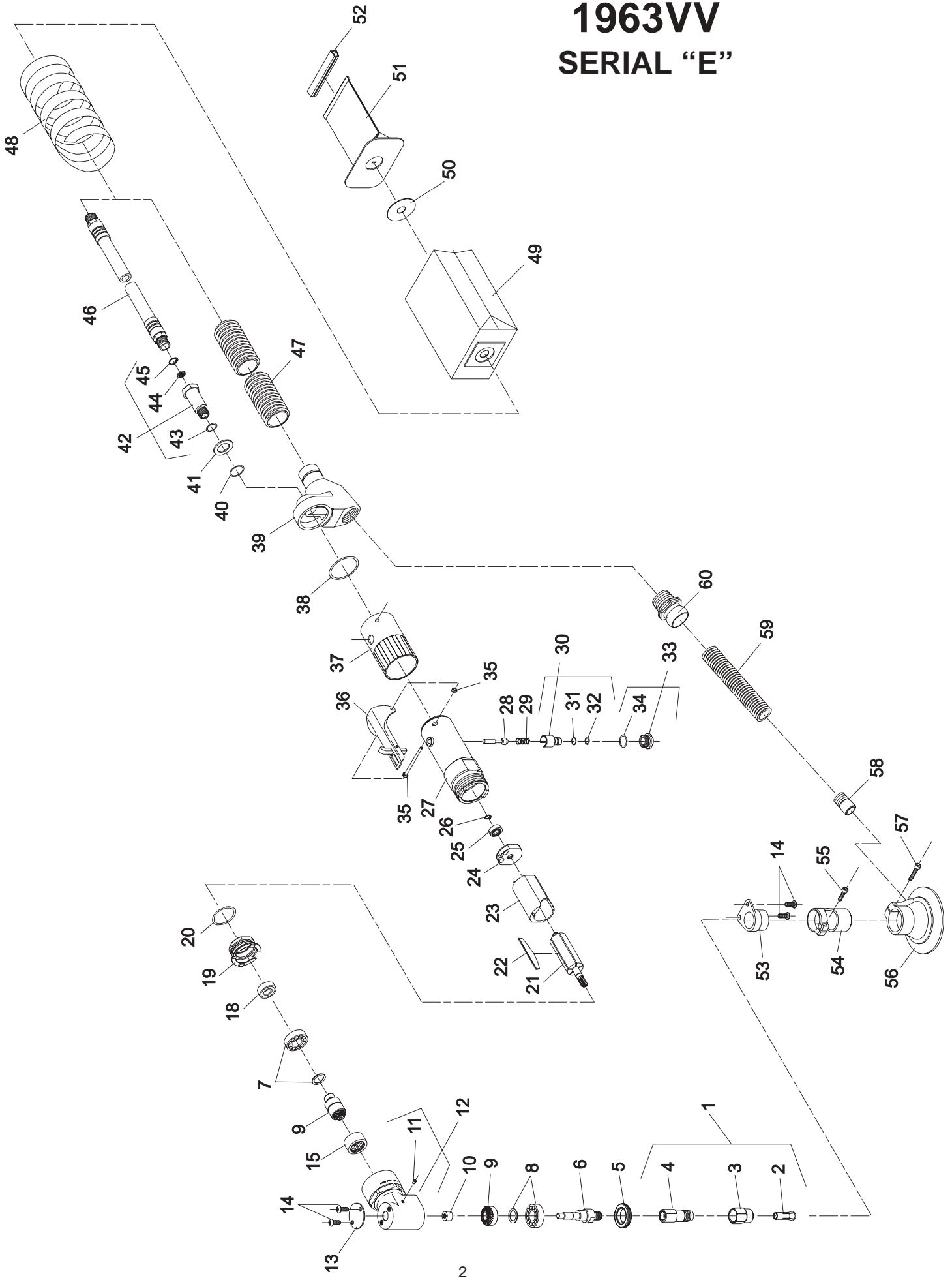
Fig. No.	Part No.	Description	Fig. No.	Part No.	Description
1.	43340	Chuck—1/4" Complete Collet	49.	911A	Ass'y—Disposable Dust Bag [Includes Figs. 49, 50, 52, & (1 only) 51]
2.	44440	Collet 1/4" (1963VV)		65768	Bag—Outer
3.	21097	Nut—Collet 11/16" Hex (1963VV)	50.	65770	Washer—Retainer (1963VV, 1965VV)
4.	21096	Body—Collet (3/8-24) (1963VV)	51.	912	Bag—Filter (1963VV, 1965VV)(5 Pack)
5.	44776	Retainer—Bearing	52.	65771	Clip—Bag Closer (1963VV, 1965VV)
6.	65961	Spindle—Output (1963VV, 1965V, 1965VV)	53.	65832	Adapter—Shroud (1963VV)
	66286	Spindle—Output (5/8-11)	54.	65746	Adapter—Shroud (1963VV)
7.	63234	Ass'y—Bearing & Spacer (Pinion)	55.	06500	Screw—Cap Soc Hex Mach (8-32 x 5/8)(1963VV)
8.	65860	Ass'y—Bearing & Spacer (Gear)	56.	65744	Shroud—3" (1963VV)
9.	19736	Gear Set	57.	06601	Screw—Cap Soc Hex Mach (8-32 x 7/8)(1963VV)
10.	10082	Bearing—Needle	58.	65738	Insert—Hose (1963VV)
11.	30375	Fitting—Grease	59.	65976	Hose—Vacuum (1963VV)
12.	65388	Head—Angle	60.	65946	Connector—3/4 NPT (1963VV, 1965VV)
13.	35708	Cover	61.	65435	Adapter—Shroud (1965V, 1965VV)
14.	07097	Screw—Button Soc Hex Mach (10-24 x 1/2) (1963VV-Quantity 4*) (1965V, 1965VV-Quantity 2*)	62.	35033	Washer (1965V, 1965VV)(3)*
15.	10081	Bearing—Needle	63.	07092	Screw—Hex Soc Hd (10-24 x 1)(2)*(1965V, 1965VV)
18.	10220	Bearing—Ball	64.	07090	Screw—Cap Soc Hex Mach (10-24 x 3/8) (1965V, 1965VV)
19.	65335	End Plate—Front	65.	65434	Ass'y—Vacuum Shroud (1965V, 1965VV)
20.	14342	Ring—"O"	66.	65674	Shroud—Brush (1965V, 1965VV)
21.	54861	Rotor	67.	65136	Brush (1965V, 1965VV)
22.	63192	Vane (Set of 5)	68.	2344	Disc Backing 5" (3/8-24)(1965V, 1965VV)
23.	65916	Cylinder		2364	Disc Backing 5" (5/8-11)(1965V-5/8, 1965VV-5/8)
24.	10552	End Plate—Rear	69.	65934	Ring—"O" (1965V)
25.	10230	Bearing—Ball	70.	65895	Adapter—Vacuum Hose, 1 1/4" Right Angle (1965V)
26.	21491	Ring—Retaining	71.	874	Hose—Vacuum (1965V)
27.	64036	Housing—Lever (Non-Reversing)	72.	65948	Hose—Vacuum (1965VV)
28.	63241	Ass'y—Valve	73.	40116	Silencer Material (1965V)
29.	21427	Spring	74.	2357	Handle—Auxiliary (1965V, 1965VV)
30.	54843	Control—Speed	75.	563	Nut—Disk Retaining (Package of 6)(1965V, 1965VV)
31.	14394	Ring—"O"		562	Nut—Disk Retaining (5/8-11) (1965V-5/8, 1965VV-5/8)
32.	14291	Ring—"O"	COMPLETE ASSEMBLIES:		
33.	54844	Retainer—Speed Control	63444	Ass'y—Housing (Non-Reversing) (Includes Figs. 27 thru 30, 33, 37, 38, 42, 73) (1965V)	
34.	14309	Ring—"O"	65953	Ass'y—Housing (Non-Reversing) (Includes Figs. 27 thru 30, 33, 37, 38) (1963VV, 1965VV)	
35.	66344	Ass'y—Pin	66347	Ass'y—Motor (Includes Figs. 18 thru 26) (1963VV, 1965V, 1965VV)	
36.	63258	Ass'y—Lever	65957	Ass'y—Angle Head (Includes Figs. 5 thru 15) (1963VV, 1965V, 1965VV)	
37.	65949	Cover—Housing (Non-Reversing) (1963VV, 1965VV)	66349	Ass'y—Angle Head (Includes Figs. 5 thru 15) (1965V-5/8, 1965VV-5/8)	
	04042	Cover—Housing (Non-Reversing)(1965V)	NOT SHOWN:		
38.	14333	Ring—"O" (1965V, 1965V-5/8)	30506	Wrench—Allen 3/16" (1965V, 1965VV)(1965V-5/8, 1965VV-5/8)	
	14313	Ring—"O" (1963VV, 1965VV, 1965VV-5/8)	30465	Wrench 9/16" (1963VV)	
39.	65433	Extractor (1963VV, 1965VV)	30466	Wrench 11/16" (1963VV)	
40.	14281	Ring—"O" (1963VV, 1965VV)	68015	Wrench—Spanner (1965V-5/8, 1965VV-5/8)	
41.	25206	Washer (1963VV, 1965VV)	*Order Quantity As Required		
42.	54837	Adapter—Intake (Includes Figs. 42 thru 45)	FURNISH CATALOG, SERIAL, AND MODEL NUMBER WHEN ORDERING PARTS		
43.	14312	Ring—"O"			
44.	30463	Screen			
45.	21541	Ring—Retaining			
46.	1376	Ass'y—Leader Hose 6 Ft.			
47.	853	Hose—Dust Collection (6 Ft.)(1963VV, 1965VV)			
48.	65844	Wrap—Spiral			

SIouxTM
TOOLS INC.

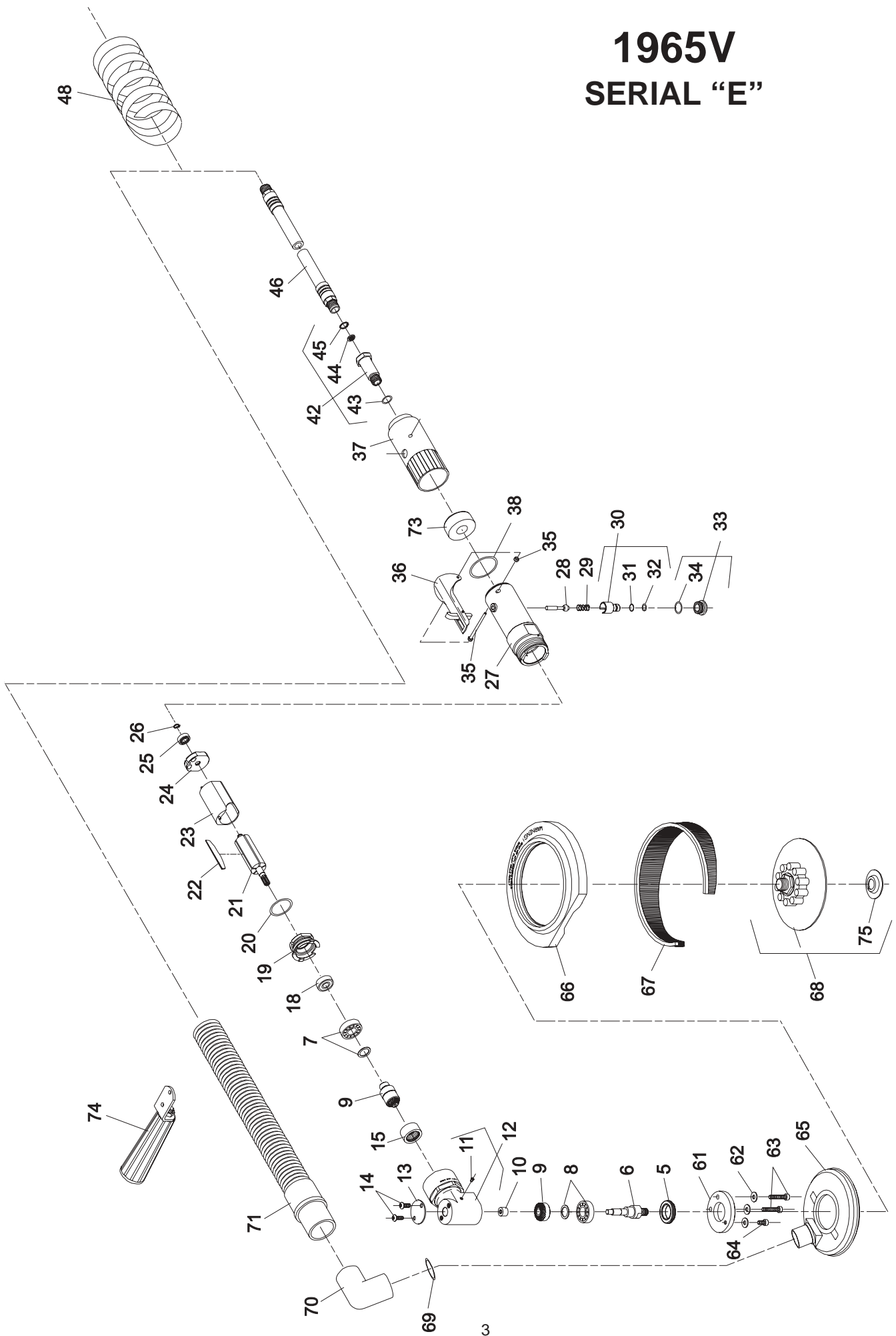
2901 FLOYD BOULEVARD ■ PO BOX 507 ■ SIOUX CITY, IOWA 51102-0507 USA ■

Printed In U.S.A.

1963VV SERIAL "E"



1965V SERIAL "E"



1965VV

SERIAL "E"

